

CANARI CYCLEWEAR ENDURANCE SHORT
 CANARI FACTORY TEAM KIT 2011
 INQ: 02/05/2011
 DESIGNER: CSR

CANARI CYCLEWEAR ENDURANCE SHORT
 CANARI FACTORY TEAM KIT 2011
 INQ: 02/05/2011
 DESIGNER: CSR



APPROVAL SIGNATURE: _____

APPROVAL DATE: _____

NOTES

DIGITAL APPROVAL: 02/05/2011

Enter customer / production notes here...

STITCH COLOR: Color 1



CANARI LOGO: CANARI LOGOS WILL APPEAR ON THE FRONT, REAR, AND COLLAR OF THE JERSEY. FRONT AND REAR LOGOS WILL BE APPROX. 1.5 INCHES ON MENS LARGE.

DIGITAL APPROVAL: ALL ART PLACEMENT IS FINAL ONCE DIGITAL ART APPROVAL IS GIVEN. A FABRIC SAMPLE WILL BE SENT OUT FOR FINAL APPROVAL ON COLOR ONLY.

CMYK BUILDS

NOTES
 locked
 black

C: 050
 M: 035
 Y: 035
 K: 100



NOTES
 white

C: 000
 M: 000
 Y: 000
 K: 000



NOTES
 n/a

C: 000
 M: 000
 Y: 000
 K: 000



NOTES
 n/a

C: 000
 M: 000
 Y: 000
 K: 000



NOTES
 n/a

C: 000
 M: 000
 Y: 000
 K: 000

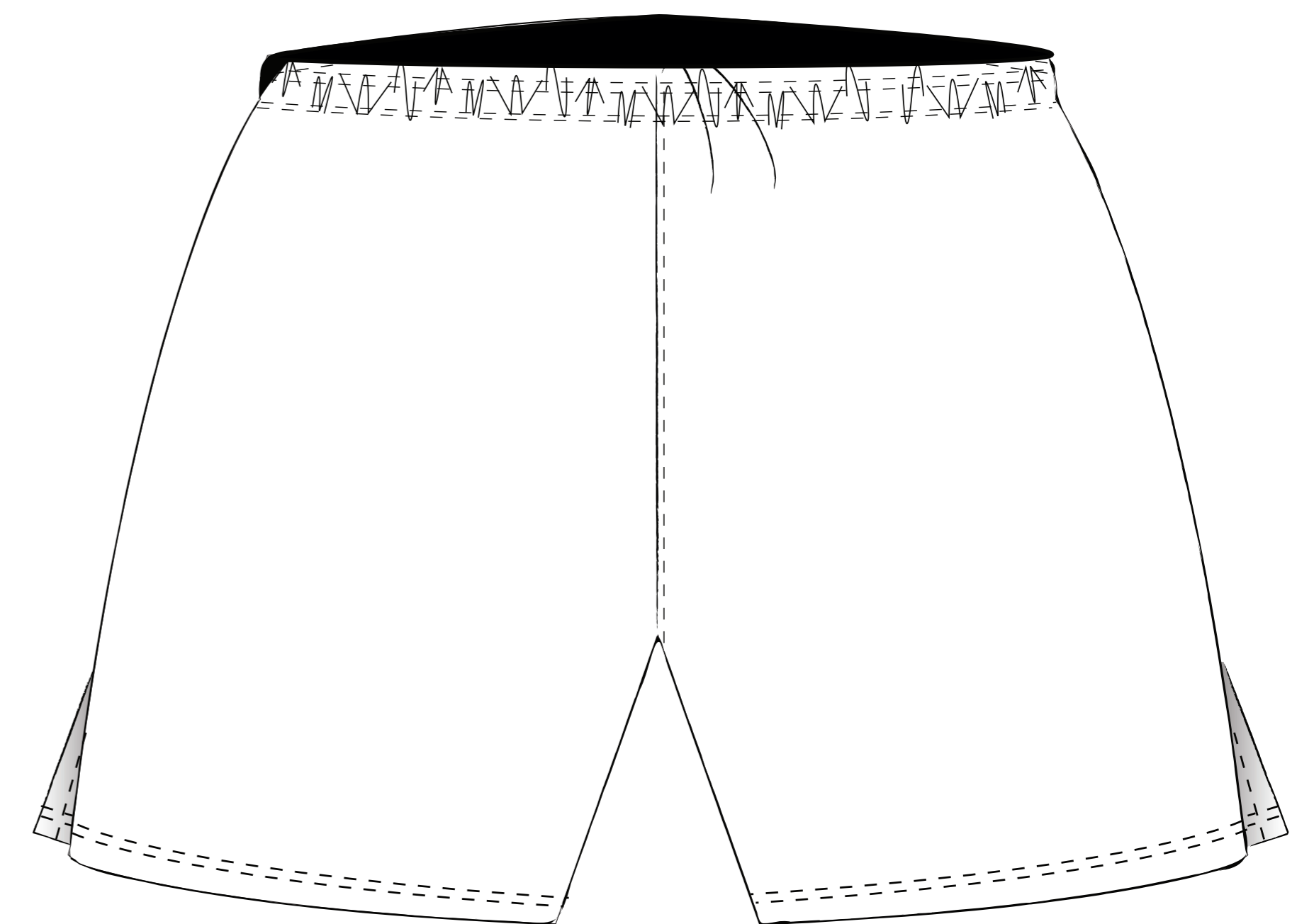


NOTES
 n/a

C: 000
 M: 000
 Y: 000
 K: 000



CANARI FACTORY TEAM KIT 2011



2 4 7 1 C O R A L S T R E E T V I S T A C A 9 2 0 8 1 U S A
 P : 8 0 0 . 9 2 9 . 2 9 2 5 F : 8 0 0 . 9 9 6 . 0 9 9 8

W W W **canari** . C O M



* PICTORIAL PROOF IS FOR VISUAL REFERENCE ONLY. BIB and SHORT CONTAIN SAME PRINTED PANLING.